

INSPIRE ADVOC
THRIVE CARE SU
EMPOWER CONNEC
with you
we can
THRIVE



Jewish Federation
of South Palm Beach County

**We are committed to
honoring our Jewish past,
enriching our Jewish
present and nurturing
our Jewish future.**

Making a difference locally, in Israel and around the world.

Dear Friends,

The Jewish Federation of South Palm Beach County (JFSPBC) is the bedrock of our local and worldwide Jewish family. With your critical support, we garner the resources to make a profound impact on Jewish life and provide the relief in times of crisis that no individual or organization could achieve alone. Often working behind the scenes, we help our people, empowering and protecting them.

Last year was unlike any other in recent Jewish memory, and we still face uncertainty about future events in Israel and antisemitism at home. Yet we remain confident and steadfast in the power of our collective. It is a privilege to stand with you to address Jewish needs and to be partners in Tikkun Olam. Together, we rally as one people to:

- Respond
- Support
- Empower
- Connect
- Educate
- Nourish
- Care
- Protect

With you, we can ensure every Jewish life counts, no matter who they are or where they are. We are *am echad b'lev echad*, one people with one heart, united in our support for each other.

With you, we can live our values through action: caring for the vulnerable, teaching and cherishing our rich history, building a Jewish future and safeguarding our vibrant peoplehood.

With you, we can thrive.

To making a bigger impact,


RICH STEINBERG
Campaign Chair


DAVID PRATT
Campaign Co-Chair


MARK SCHAUM
Chair, Jacobson Jewish
Community Foundation

with you we can RESPOND

Israel awoke to horror on Oct. 7 — exactly 50 years and a day after the traumatic start of the Yom Kippur War. Because our Federation always stands at the ready, equipped to mobilize when our Jewish family is thrown into chaos, we have been and are continuing to support our people and partners on the ground.

RAISING \$800M+ FOR ISRAEL

After Hamas raided Southern Israel, killing and kidnapping our brothers and sisters, the national Federation system, including our SPBC Federation, raised more than \$800 million for the Israel Emergency Campaign. This act of care and compassion supported much-needed efforts for trauma relief, housing relocation, mental health care and so much more.

280,000+
Israelis given essential food
assistance

60,000+
Israelis supported by economic
relief and recovery programs



Medical equipment provided to:

25 national hospitals

10 psychiatric hospitals

4 rehabilitation centers

3 rehabilitation departments



HELPING ISRAELI CHILDREN FEEL AT HOME

With her three children, Miri Rosen fled Israel to South Palm Beach County after Oct. 7. They were displaced, an ocean away from home.

To ensure her little ones had some normalcy and routine, they became part of our Israeli Student Program, created to meet the growing number of Israeli families who moved to South Palm Beach County after Oct. 7. For months, they were among the 60 school-aged youth who had a safe, calm space to craft, snack, bake, play and process their emotions.

Federation quickly partnered with Ruth & Norman Rales Jewish Family Services (RRJFS), Adolph & Rose Levis JCC and Chabad Israel Center to create this Israeli Student Program.



ADDRESSING TRAUMA: THE INVISIBLE WOUND OF WAR

Micah, 2, refused to take off his shoes, even come bathtime or bedtime, in case he needed to run from the “bad men.” Rachel, 8, had to be coaxed out of a closet to attend funerals for her mom and dad.

These are some of the stories of childhood trauma, a result of Hamas burning homes and butchering families on Oct. 7. So many young lives need and deserve our support.

For months, our partner ELL: Israel Association for Child Protection has been providing children who witnessed the unthinkable with necessary care, including therapy and shelter.

OCT 7

with you we can

RESPOND



Supporting Israeli soldiers via our partner agency, Yashar LaChayal

HELPING SOLDIERS ON THE GROUND

We sent emergency dollars to meet an urgent need for silent generators, ensuring soldiers stationed in Northern Israel would continue to have power, even when their electricity went out.



PUTTING OUT FIRES

Near-daily rocket and missile attacks from Hezbollah have sparked forest fires, ravaging thousands of acres of land across Northern Israel. To protect our people, our Israel Emergency Campaign, in partnership with Hands on Tzedakah, paid for fire-fighting equipment for 33 communities in the Golan Heights. Fires that would have taken three days to extinguish are now being put out in a matter of hours, saving large areas of land.



Photo Credit: Allison Shelley

MARCHING FOR ISRAEL IN WASHINGTON, D.C.

More than 130 South Florida Hillel students, Federation leaders and community members from South Palm Beach County were among the 300,000 + attendees at the largest pro-Israel rally in history.



SUSTAINING JEWISH LIVES

A longstanding partner, the American Jewish Joint Distribution Committee (JDC) is lifting lives and strengthening communities on the ground, offering a lifeline to Jewish people in Israel.

24,000+ elderly people and people with disabilities were provided emergency aid and support services

400,000+ Israelis are receiving mental health care

We must prepare for every unknown mission.

The moments of quiet and calm are just that. They are moments, never here to stay. Understanding we live in a world of unknowns, we must continue to ensure our Federation is ready to respond. Quickly and efficiently.

With you, we can prepare for any and every need.

with you we can EDUCATE

ANTISEMITISM ON COLLEGE CAMPUSES

College is for higher education,
not hating on Jewish students
and spaces.

700%
increase in
antisemitic
incidents on
college campuses
nationwide

Source: Hillel International

1,500+
antisemitic incidents,
including vandalism,
hate speech and physical
harassment, at college
campuses nationwide



“Transferring from a private school in New Jersey right after the war, I had no idea how open and welcoming Hillel would be. I am finally able to express my love and support for Israel, without being scared or overpowered.”

EDEN
HILLEL OF BROWARD AND PALM BEACH

800+ SIGNATURES AGAINST ANTISEMITISM

Hillel of Broward and Palm Beach County organized successful — and delicious — initiatives to combat antisemitism on campus. At the second annual “Spread Cream Cheese, Not Hate,” more than 800 college students signed a pledge against antisemitism and received a free bagel with cream cheese.

**HATE DOES NOT AND WILL NOT DEFINE OUR COMMUNITY.
TO ADDRESS RISING ANTISEMITISM, OUR DOLLARS ARE
EMPOWERING ON-THE-GROUND LEADERS: STUDENTS AND
EDUCATORS.**



600+ HIGH SCHOOL STUDENTS CONNECT WITH THEIR ROOTS

High school students across South Palm Beach County participate regularly in the NCSY Jewish Student Union (JSU), which creates a space for teens to “do Jewish.” Every program — from holiday celebrations to Shabbatons to Israel summits to Holocaust education sessions — is meant to strengthen Jewish connectivity and identity.



2,700+ STUDENTS IN JEWISH DAY SCHOOL

Our diverse Jewish day schools play a vital role in fostering Jewish values, identity and culture. This strong foundation benefits students and helps build a vibrant and engaged Jewish community for the future.

“The chance to travel alongside Holocaust survivors was a profound privilege. Hearing their firsthand accounts of unimaginable hardship and resilience was an emotional and educational experience I will never forget.”

**D.W. PRINCIPAL, PALM BEACH
COUNTY SCHOOLS**



EDUCATORS PARTICIPATE IN D.C. HOLOCAUST PROGRAM

inSIGHT Through Education, a nonprofit that provides Holocaust education in Florida, brings administrators, principals and teachers from public schools in South Palm Beach County to Washington, D.C. for a three-day program in Holocaust education. Accompanied by Holocaust survivors from our community, educators learn lessons they can apply in the classroom and beyond.

with you
we can

SUPPORT

MAKING AN IMPACT MEANS REACHING FAR BEYOND OUR HOMETOWN TO STRENGTHEN *EACH AND EVERY* JEW IN NEED.



ARGENTINA

A troubled economy and extreme poverty continue to plague Argentinians. Our partners are doing everything in their power to alleviate their financial stress.

630

Argentinian Jews **given nutritious food** via JDC

160+

Argentinian Jews **received subsidies for rent and utility payments** via JDC



ARGENTINA

FRANCE

The riskiest efforts to help people are born of necessity. The Jewish Agency for Israel (JAFI) is supporting French Jews, many of whom have made or are planning to make *aliyah* (immigrate to Israel) because of antisemitism.

284%

increase in antisemitic attacks since Oct. 7

370%

increase in *aliyah* case files compared to last year



UKRAINE

Bombs and missiles — chaos is still a terrifying norm for Ukrainians trapped in war. To support them, our partner agencies are continuing to provide care and resources.

1M+

pounds of food, medicine and other necessities delivered via JDC to people living in Ukraine

50,000+

elderly and low-income Ukrainian residents received homecare assistance, including cooking, cleaning and other forms of humanitarian aid via JDC

ISRAEL

Our commitment to our people and our homeland is constant. There is no intermission. As Jewish people, we are collectively responsible for the safety and security of Israel.

420,000+

meals provided via JAFI Amigour **to evacuees and elderly residents** living in subsidized housing

10,000+

grants via JAFI to help victims of terror pay for **medical bills and counseling**

3,000

tons of fresh produce delivered via Leket Israel for Israelis grappling with food insecurity



South Pacific Ocean

with you
we can

NOURISH

WE MUST FEED BODIES AND MINDS TO MAINTAIN HEALTH FOR ALL.

ADDRESSING HUNGER

We abide by the ancient invitation: "All who are hungry, come and eat."



The Jacobson Family Food Pantry, a part of RRJFS, has provided groceries to 600+ people. One of the recipients is Grandma Judy, a 73-year-old resident who has been raising her grandson since he was born.

215,000

pounds of food distributed to 414 Holocaust survivors and other residents through RRJFS

"I have such gratitude and appreciation for this service because people really take their time to help you."

JUDY

IMPROVING MENTAL HEALTH

More anxiety. More depression. Mental health must be at the forefront of our efforts to support every Jew, no matter their age or stage of life.



HELPING VICTIMS RECOVER

Tamar was at Supernova, an Israeli music festival of love and peace. But then 6:30 a.m. came. Sounds of music were replaced by rampant gunfire. As she ran, crossing the open desert fields to reach a nearby shelter and eventually a house, she was shot in the stomach by a terrorist. The bullet exited through her back.

Now in recovery, Tamar is being supported by the Fund for Victims of Terror, an initiative of the Jewish Agency for Israel, one of our closest partners. The dollars are used to support psychological counseling and alleviate financial strain, among other efforts to rebuild lives after terrorist attacks.

HADAR HEALTH AND WELLNESS teaches students to navigate their social and emotional experiences, breaking the stigma around mental health.

”

Mental health is so overlooked, but I'm happy that I've learned how to **feel empowered**, how to **prioritize my state of being** and that I can **help a friend in need** or help her look for help.

12TH GRADE STUDENT
Health and Wellness Program
at Hadar High School for Girls



Based in Jerusalem, Crossroads offers teens subsidized therapy in their native language. **95%** of participating teens show an improvement in self-esteem and motivation.

with you we can EMPOWER

THROUGH EDUCATIONAL AND CULTURAL EXPERIENCES, WE ARE EMPOWERING YOUTH AND YOUNG ADULTS TO STEWARD OUR JEWISH FUTURE.

BBYO

BBYO creates pluralistic and identity-rich experiences, inspiring Jewish connection and leadership among teens. Through a variety of programs, including ones focusing on Jewish education, ritual and social action, BBYO shapes the confidence and character of thousands.

600

teens in 5 chapters across South Palm Beach County participated in

195

meaningful events this year



"The bonds forged with my BBYO peers transcend mere friendship; they're an intrinsic part of my identity and support system."

HAYDEN

SINAI SCHOLARS

Lectures and discussions on Jewish text are the norm at Chabad of West Boca Sinai Scholars, a free program for high school students. Participants come from all over South Palm Beach County to learn, strengthening their Jewish knowledge and identity along the way.

25

teens attended 30+ classes to engage in Torah study and meaningful discussion

"My favorite part of the course was learning about Jewish philosophy and what our mentors had to say about leadership, personal development and success."
ARON



ONE TABLE

Through OneTable, young adults across all denominations participate in weekly, community-oriented Shabbat dinners. Together, they create their own customs and traditions, connecting to each other and Judaism.

679

young adults attended OneTable dinners in South Palm Beach County



JEWISH SUMMER CAMP

Jewish summer camp is more than fun and games. This is where children learn about their Jewish heritage, make lifelong friends and create lasting memories.

190+

children awarded scholarships from JFSPBC and Jacobson Jewish Community Foundation to attend Jewish summer camps



with you we can CARE

WE ARE RESPONSIBLE FOR THE ELDERLY AND PEOPLE WITH DISABILITIES, ALL OF WHOM NEED AND DESERVE TO BE TREATED WITH DIGNITY.

HONORING ELDERLY

The Jewish value of honoring our elders is a reminder to care for our most vulnerable, including Holocaust survivors.

FROM MARCH TO MIRIAM

This local initiative, supported by the Jewish Women's Foundation at JJCF, brings together middle schoolers and 30+ Holocaust survivors through monthly visits, weekly phone calls and in-person gatherings.



170

Holocaust survivors, students and their families, Federation staff and volunteers meet regularly, **passing the torch of memory** to the next generation

200+

low-income elderly receive nutritious meals, transportation cards, dental subsidies and other financial support at Yad LaKashish in Jerusalem

“The time I get to speak and be with teens and the ongoing connections I have developed is such a highlight for me.”

HERSHEL

CREATING OPPORTUNITY

Our Federation supports a broad array of programs for children, teenagers and adults with disabilities. Every single person deserves opportunities to do more and be more, regardless of ability.

75

participants **impacted by Camp Kavod and 20+ other special needs programs** at Adolph & Rose Levis JCC Schwedelson Special Needs Department



JARC

At 31, Cameron became an orphan. He said, “It was no longer three against the world, just me.”

With help from a friend, Cameron became a resident at Jewish Association for Residential Care (JARC) Joshua Rales House, a group residence home for adults with autism. Through JARC, he receives vocational training, which recently helped him land a job at Cafe 95.

“JARC has given me a sense of direction and purpose,” Cameron said. “I am blessed to be able to work at Cafe 95, and help in whatever ways I can.”



YOUNG ADULT CLUB

The Young Adult Club at Friendship House integrates social skills, cooking, shopping and off-site adventures to encourage independence and connection.

“I enjoy the activities, especially the Shabbatons. Through these programs, I have met my closest friends.”

SAMANTHA

with you we can CONNECT

OUR IMPACT STARTS RIGHT HERE AT HOME, WHERE WE SERVE AS THE CONVENER OF JEWISH LIFE. WE BRING PEOPLE TOGETHER, ALL FOR THE SAKE OF BUILDING A STRONG, VIBRANT GLOBAL JEWISH COMMUNITY.



CROSSING CULTURES

200+ Jewish students and teachers connect in-person and virtually through School Twinning, a program between schools in South Palm Beach County and Zichron Yaakov, our JAFI Partnership2Gether community in Israel.



MAKING CARDS FOR ISRAELI SOLDIERS

PJ Library children made heartfelt cards, expressing gratitude for soldiers of the Israel Defense Forces. They were delivered by local community members visiting Israel.



A LIVING BRIDGE TO ISRAEL

Our *ShinShinim* serve as faces and voices of Israel, right here in our community. As cultural ambassadors, they help people connect with Israel through conversations and experiences.

500 students and **100 families** connected to Israel and celebrated Jewish holidays with “Israeli style” through engaging programs and activities with our *ShinShinim*

“Bearing witness is a moral responsibility, because we must and will convey the truth.”
SHELLY SNYDER
CHAIR OF WP



BEARING WITNESS TO INHUMANITY

Ongoing missions are bringing Federation leaders to Israel to understand the devastation of Oct. 7.



VISITING OUR SISTER CITY

Zichron Yaakov is our home away from home in Israel. Recent visitors included a group of SPBC Wexner Heritage Foundation leaders, who spent the day bonding with local residents, exploring the town and even making paper with a local artisan.

with you
we can

PROTECT

A WAVE OF ANTISEMITISM IS JEOPARDIZING OUR SAFETY, RIGHT HERE IN SOUTH PALM BEACH COUNTY. TO MEET GROWING SECURITY NEEDS, WE ARE FOSTERING A CULTURE OF VIGILANCE, ENSURING OUR RESIDENTS ARE SAFE AND SECURE.

75+ “Stop the Bleed” trainings taught attendees how to stop a wounded person from bleeding out

200+ “Stop the Bleed” kits distributed to agencies, schools and synagogues

.....
We protect our **100**-acre campus, which includes 5,500 daily visitors and 900 full-time residents.



“I’m alive today because I took that training.”
RABBI HAZZAN JEFFREY MYERS
SURVIVOR OF THE MASS SHOOTING THAT KILLED 11 PEOPLE AT THE TREE OF LIFE CONGREGATION IN SQUIRREL HILL, PA

PREPARING OUR COMMUNITY

We partner with the Secure Community Network, the official safety and security organization of the North American Jewish community. Together, we protect more than 200,000 Jewish residents in Boca Raton, Delray Beach and Highland Beach.

.....
130+ security trainings equipped
4,850+ people for life-threatening situations



MONITORING AND RESPONDING

In this new era of Jewish concerns, where day-to-day reality is characterized by increased threats and violent attacks, our Federation is receiving more and more security requests from local Jewish organizations. We provide risk assessments; engage with law enforcement to ensure the safety of college students at local Hillels; and coordinate with agencies, schools and synagogues on events and activities. Through relationship building and partnership, we are taking a proactive approach to keep our community members safe.

with you we can DO MORE

EVERY DOLLAR YOU GIVE HELPS OUR PARTNER AGENCIES,
ALL OF WHICH ARE ON A MISSION TO MAKE A LASTING IMPACT.

JANE & ALAN CORNELL FUND FOR ISRAEL & OUR GLOBAL FAMILY

AKIM Equal in Uniform Disabilities Program

American Jewish Joint Distribution Committee (JDC) Chanoch Employment Training | Glickman Training Center | Jewish Renewal – Former Soviet Union | Social Welfare Relief – Argentina, Former Soviet Union and Ukraine | Szarvas Summer Camp

Beit Issie Shapiro iAbility: Technology for Children with Disabilities

Bet Elazraki Therapy for Children and Staff

Crossroads Jerusalem Mental Health Outreach and Therapeutic Response

Eitan Adopt a Fitness Group Disabilities Program

Ethiopian National Project (ENP) Youth Scholastic Performance & Empowerment

ELI Trauma Relief and Therapeutic Intervention

Hand in Hand Haifa School Shared Society Program

Israel Elwyn Self-Advocacy & Leadership for Adults with Disabilities

JCC Krakow Jewish Community Building

Jewish Agency for Israel (JAFI) Amigour Elderly Housing | Kol Ami Mechina | MASA Immersive Israel Experiences | Partnership2Gether (P2G) - Zichron Yaakov | Summer Camps in FSU | Shinshinim Israeli Year of Service in South Palm Beach County

Latet Nutritional Security Initiative

Leket Israel Meal Rescue Route

Meitarim Teacher Training in Integrated, Pluralistic Schools

Nirim Foundation At Risk Youth Graduates Unit

Onward South Palm Summer Internship Cohort in Israel

Susan's House At-Risk Youth Jewelry Design Program

United Hatzalah Post October 7th Advanced Resiliency Training

World ORT Kfar Silver Dropout Prevention Program

Yad Lakashish Hot Meals and Health Insurance Program for Needy Seniors

Yashar LaChayal Financially Disadvantaged Soldier Fund

SARAH & MAX PECHTER FUND FOR SAFETY NET SERVICES

B'nai Torah Congregation Community Shower (Hygiene Program) | Recovery Seder

Boca Raton Synagogue Tomchei Shabbat - Food and Supplies Assistance

Family Promise Road to Independence

Gift of Life Marrow Registry Engaging Tomorrow's Young Jewish Leaders Today Swab Drives

Hadar High School for Girls Health & Wellness

Hebrew Free Loan Society Interest-Free Loans

Jewish Adoption & Family Care Options (JAFCO) Group Home Program

Jewish Education Loan Fund Interest-Free Loans

Jewish Recovery Center Weekly Shabbat & Annual Shabbaton

JScreen Jewish Genetic Education and Outreach

Ruth & Norman Rales Jewish Family Services (CFFC): Community Outreach Programs | Community Services: Food & Financial Assistance, Volunteer Opportunities | Counseling and Mental Health | Senior Services & Transportation

Sharsheret® Pink Shabbat® South Florida

JUDI & CRAIG DONOFF FUND FOR SPECIAL NEEDS

Adolph & Rose Levis JCC Schwedelson Special Needs Department Scholarship and Programmatic Assistance

B'nai Torah Congregation Facilitator for Children with Special Needs

Donna Klein Jewish Academy Student Services

Friendship Circle of N. Broward and SPBC Sunday Circle

Friendship House Family Events and Holiday Inclusion Programs | Young Adult Club

JARC, Ruth & Norman Rales Jewish Family Services, Adolph & Rose Levis Jewish Community Center Relationships 101 for Adults with Special Needs

JARC Florida Residential Services Scholarship

Katz Hillel Day School ETGAR Services

Katz Yeshiva High School Special Needs Program

Orthodox Union/ Teach Florida Services for All Initiative

Ruth & Norman Rales Jewish Family Services Center for Families and Children (CFFC): Special Needs Therapeutic Family Resource Center (TFRC)

Torah Academy of Boca Raton Bisvhili Resource Program

Yachad Shabbat B'Yachad

WILLIAM K. AND NAOMI KRAMER FUND FOR JEWISH LIFE & LEARNING

Adolph & Rose Levis JCC Judy Levis Krug Boca Raton Jewish Film Festival | Marleen Forkas Camps Scholarship Assistance | Zale Early Childhood Learning Center Scholarship Assistance

BBYO Gold Coast Teen Leadership Training & Development Program

Birthright Israel 10 Day Educational Group Trips to Israel for Jewish Young Adults

B'nai Torah Congregation Ahava Shabbat – Outdoor Shabbat Program | Sababa Boca | Boca Raton Interfaith Clergy Association/Boca Raton Youth Association | Camp Keshet Scholarship Assistance

Boca Beach Chabad Chanukah Public Concert and Candle Lighting

Boca Jewish Center Dor L'Dor Parent Child Learning | Growth Through Torah Lecture Series

Boca Parliament Israeli Networking Meetings

Chabad of Central Boca Raton Chanukah at Town Center Mall | Lag B'omer Picnic and BBQ

Chabad of Delray Beach Chanukah Celebration

Chabad of East Delray Beach Shabbat on the Ave.

Chabad of N. Broward and Palm Beach Solomon Leadership Program

Chabad of West Boca Raton Great Big Challah Bake | Sinai Scholars Leadership Program

Chabad Student Center Purim Party | Scholars in Residence

Congregation B'nai Israel B'nai Babies | 6th Grade B'nai Mitzvah Seminar

Congregation Shaarei Kodesh Experiential Educational | College Connection | The Spirits of Shabbat

Congregation Torah Ohr Century Village Connects

Donna Klein Jewish Academy Scholarship Assistance

From March to Miriam Lunch and Learn

Hadar High School for Girls Bringing it All Home | Community Sisters Chanukah Chagiga | Leebee Bamizrach | Scholarship Assistance

Hillel International Funding for Florida's 7 Hillels

Hillel of Broward & Palm Beach Weeks of Welcome | Hillel's Educational Programs at FAU | Israel Awareness Week | Spread Cream Cheese Not Hate

inSIGHT Through Education, Inc. DC Field Study Trips for Administrators and Educators

Jewish Education Center Billie Marcus Camp Nageela Scholarship Assistance

Katz Hillel Day School Scholarship Assistance

Katz Yeshiva High School Scholarship Assistance

Keshet Community Pride Shabbat

Liumi Farm to Table Shabbat Dinners

NCSY Jewish Student Union

PJ Library® **PJ Our Way**™ | Grandparent's Initiative

Temple Beth El Child Care Scholarship

Temple Beth Shalom Adult Ed Jewish Studies Program

Torah Academy of Boca Raton Scholarship Assistance

Yeshiva Tiferes Torah of Boca Raton Speaker Series | Big Brother Mentoring Program

with you
we can

RESPOND
EDUCATE
SUPPORT
NOURISH
EMPOWER
CARE
CONNECT
PROTECT
THRIVE

TWO WAYS TO GIVE GENEROUSLY ANNUAL CAMPAIGN

Together we give. Together we thrive. Our Jewish Federation has been and will always be the cornerstone of Jewish life in South Palm Beach County. To strengthen our efforts to meet evolving needs, we work alongside our partner agencies near and far, making a bigger and better impact. We accomplish this — and we can accomplish so much more — with the generosity of our community members.

LEGACY GIFT

Just as generations before invested in Jewish institutions to keep Judaism alive and strong, you have the opportunity to create your own legacy, ensuring that your values live on and the collective vision of a thriving, vibrant Jewish future is fulfilled.

GET INVOLVED



Make a
donation



Volunteer
your time



Attend our
events



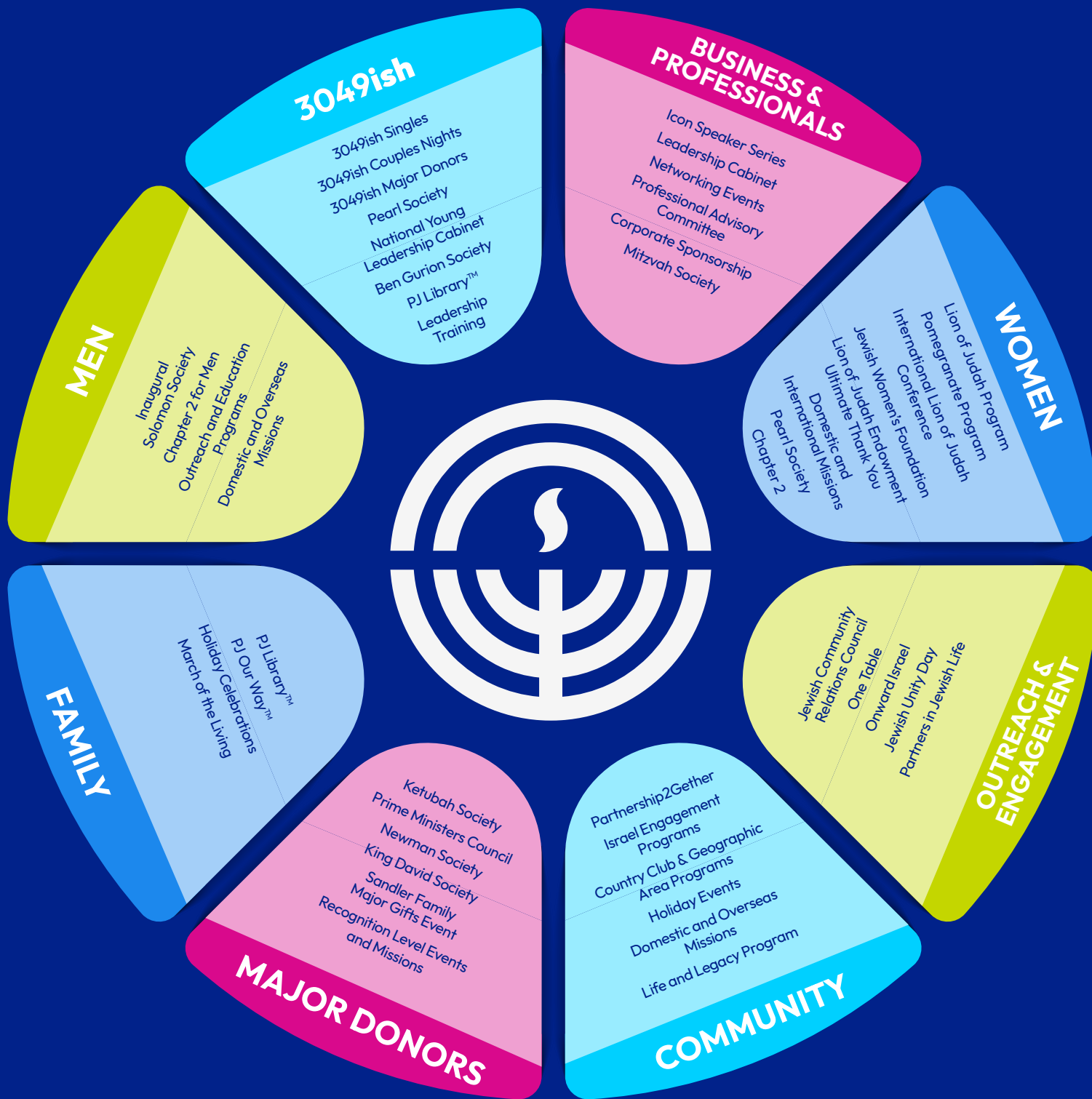
Advocate
for causes

Take one step to become involved, or do them all.

Make our Federation yours, all the while changing lives.

Get started: jewishboca.org and jewishdelray.org

with you we can THRIVE



DONOR RECOGNITION LEVELS

Your gift to Federation creates a lasting impact on our community and future generations.

Ketubah Society

A cumulative household gift of \$1,000,000 or more to the Jewish Federation of South Palm Beach County

Prime Ministers Council

Household gift of \$100,000+

King David Society

Household gift of \$25,000+

Newman Society

For those who endow their KDS annual campaign gift

Major Gifts

Household gift of \$10,000+

Solomon Society

Individual Men's Gift of \$5,000+

Business & Professional Division

Cabinet Member Individual Gift of \$1,000+

3049ish

National Young Leadership Cabinet Individual Gift of \$5,000+ (by invitation only)

Ben Gurion Society Household Gift of \$1,000+ (Under age 49)

Pearl Society – Individual Woman's gift of \$360+

Perpetual Annual Campaign Endowment (PACE)

Enables your annual campaign gift to live on forever

Professional Advisory Committee

Individual Gift of \$1,000+ (Over age 35)

Individual Gift of \$500+ (Under age 35)

Women's Philanthropy Division

Lion of Judah Endowment for our forever Lions

Lion of Judah Individual Woman's Gift of:

Black Diamond PMC \$100,000+

Cognac Diamond \$75,000 - \$99,999

Canary Zahav Diamond \$50,000 - \$74,999

Amethyst \$36,000 - \$49,999

Emerald \$25,000 - \$35,999

Sapphire \$18,000 - \$24,999

Ruby \$10,000 - \$17,999

Lion of Judah \$5,000 - \$9,999

Pomegranate \$1,800 - \$4,999

Pearl Society \$360-\$1799

Get involved at jewishboca.org and jewishdelray.org

or call 561-852-3100 for more information



Jewish Federation
of South Palm Beach County

together
we thrive

jewishboca.org and jewishdelray.org



Jewish Federation
of South Palm Beach County

— together we thrive —

9901 Donna Klein Blvd.

Boca Raton, FL 33428

jewishboca.org

jewishdelray.org